

Joining the ACC District Annexation Information

Wednesday, October 10, 2018

Pflugerville Chamber of Commerce Board

ACC AT-A-GLANCE

#1	Trainer/retrainer and University Transfer
76,000+	Total students enrolled annually
6,731	Dual Credit + ECHS students
11	Campuses
3	ACCelerators (soon to be four)
100+	Programs
RN-to-BSN	First Bachelor's Degree
\$85	In-district tuition + fees per credit hour
Forbes Best	Best Places to Work, 2016
Incubators	Bioscience, Fashion, Small Business, New Media
HSI	Hispanic Serving Institute
Riverbats	Mascot



ACC's UNIQUE MISSION

Gateway to Higher Education & Training



Adult Education

Get college-ready

- Adult Education
- GED & ESOL
- Developmental Math, Reading and Writing
- College Prep



Workforce

Train for a Career

- 100 programs
- Certificates & Degrees
- Continuing Education
- H.S. Career Academies



Academic

Earn a degree

- Dual Credit & ECHS
- Associate Degrees
- Co-enrollment
- University Transfer



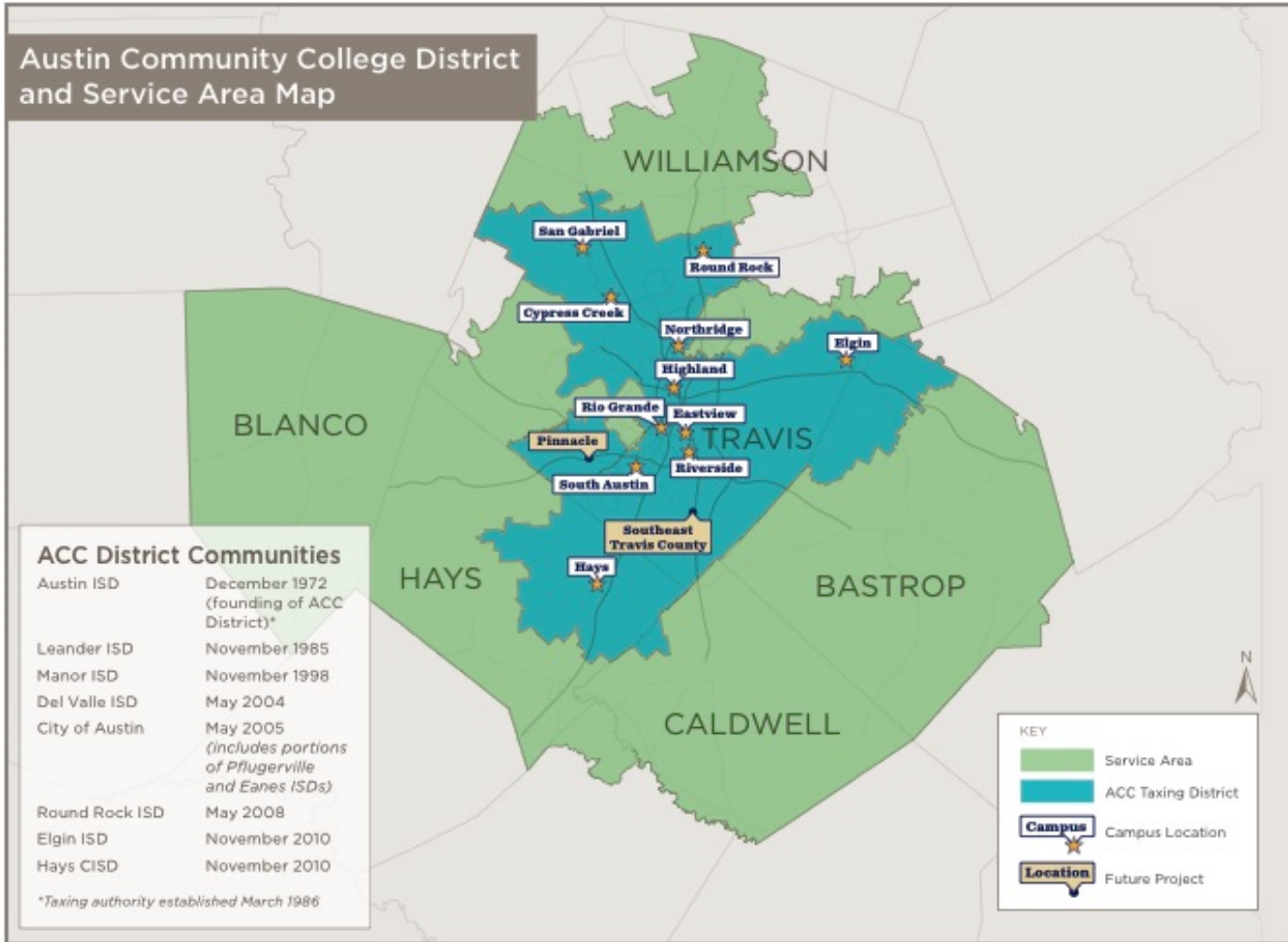
Professional

Advance your career

- Post-graduate level
- License preparation
- Certifications
- Continuing Education
- Corporate Training Solutions



ACC DISTRICT SERVICE AREA



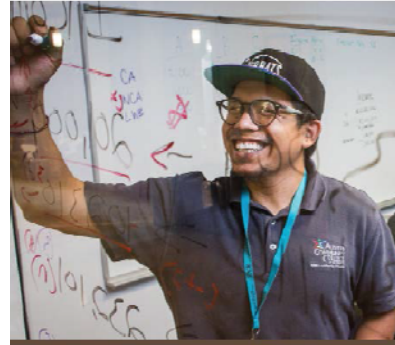
ACC_062118



10 AREAS OF STUDY



**Arts, Digital Media
& Communications**



Business



**Culinary, Hospitality
& Tourism**



**Computer Science &
Information Technology**



**Design, Manufacturing,
Construction & Applied Tech**

10 AREAS OF STUDY



Education



Health Sciences



Liberal Arts



Science, Engineering & Math



Public & Social Services

2014 BOND PROJECTS



Capital Improvements

- **Districtwide** - Campus upgrades, safety, and accessibility
- **Hays** – Public Safety Training Center for first responders
- **Rio Grande** - Historical and state-of-the-art renovation
- **ACC Highland** - Innovative training centers for high-demand careers



2014 BOND PROJECTS



Capital Improvements

- **Elgin** - Expanding Sustainable Agriculture and Veterinary Tech
- **San Gabriel** – First campus in City of Leander featuring general education; featuring ACCelerator
- **Round Rock** - Expanding capacity and healthcare offerings; featuring ACCelerator



IN-DISTRICT BENEFITS & COST

- Benefits to Pflugerville ISD residents
 - In-district Tuition
 - Customized Training Programs
 - Increased Services
 - Facilities
 - Board Governance
- Fiscal Implications to taxpayers
 - Ad Valorem Tax

TUITION & FEES COMPARISON

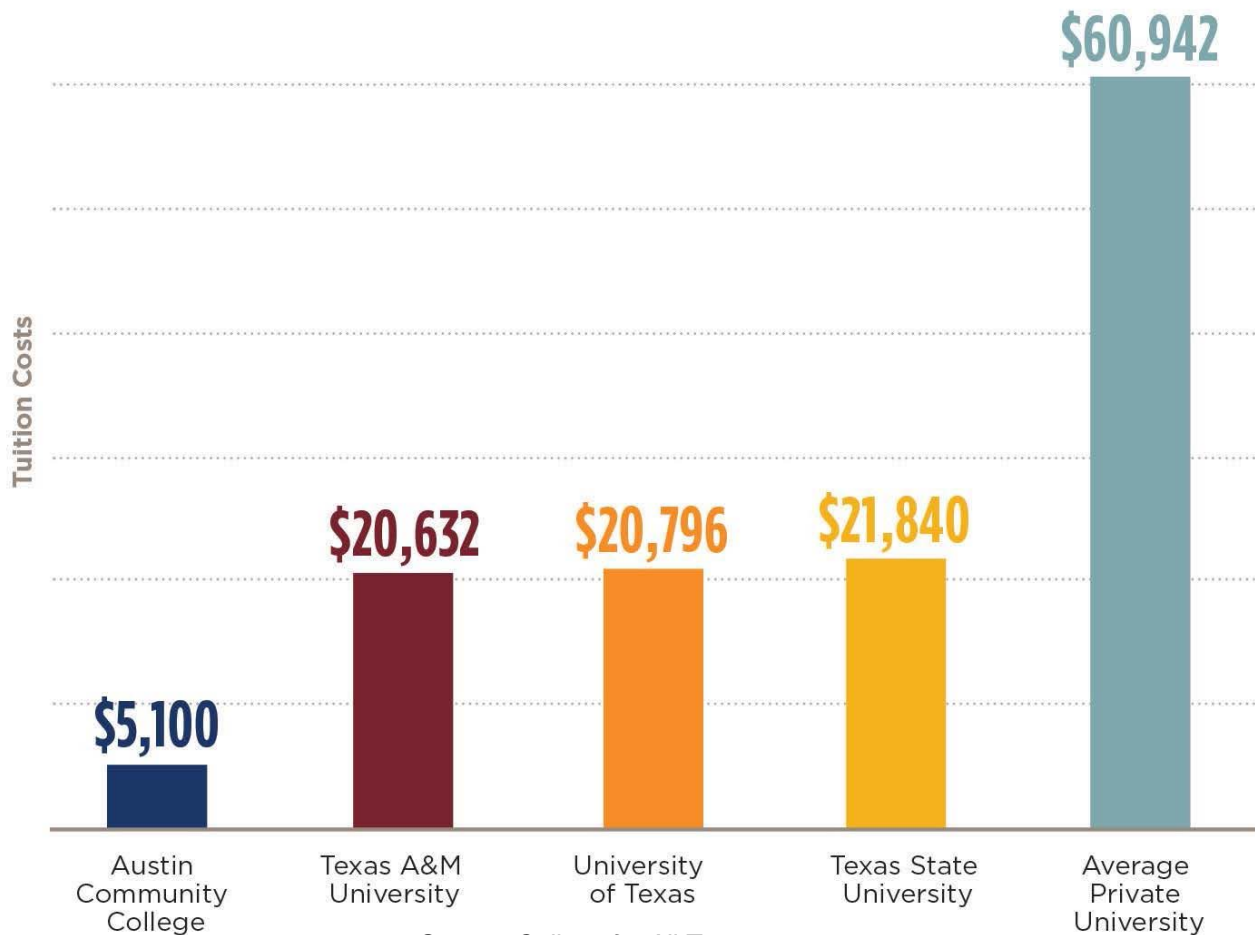
ACC 2018-19 Tuition and Fees (no tuition increases five years running)

Credit Hours	In-district	Out-of-district
1	\$85	\$361
3 (one course)	\$255	\$1,083
9 (three courses)	\$765	\$3,249
15 (five courses)	\$1,275	\$5,415
30 (1-year)	\$2,550	\$10,830
60 (2-years)	\$5,100	\$21,660

SAVINGS ON TUITION

Tuition & Fees Cost Comparison (2018-19)

2 years/60 credits In-District/In-State costs



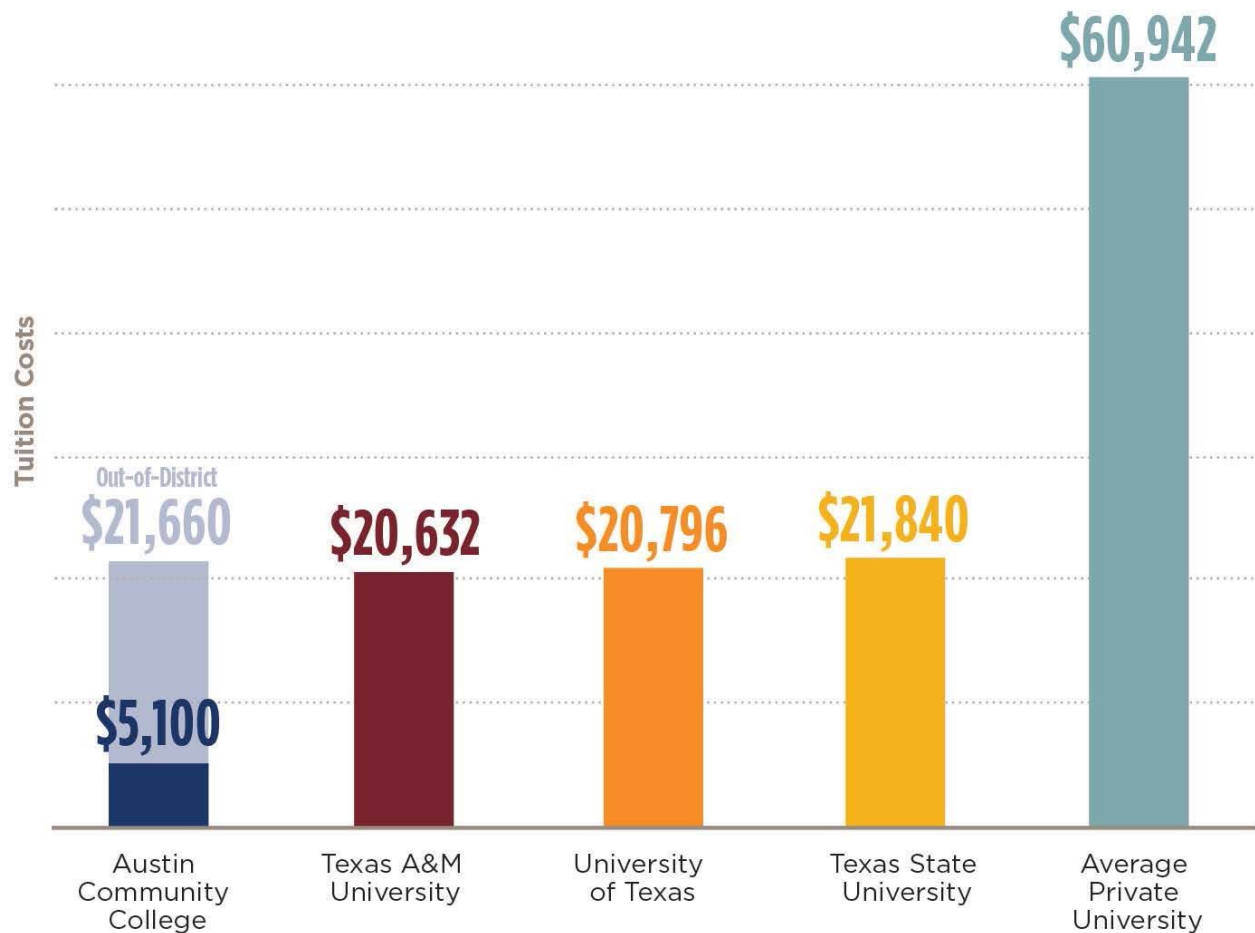
Source: College for All Texans



SAVINGS ON TUITION

Tuition & Fees Cost Comparison (2018-19)

2 years/60 credits In-District/In-State costs



Source: College for All Texans



TAX IMPACT

What will this cost me as a homeowner?

ACC's combined tax rate is \$0.1048 per \$100 assessed property valuation. Based on the average PfISD home value of about \$200,000, the average ACC tax bill for a homeowner would be about \$17.03 per month/\$204 per year. ACC offers the following exemptions: (1) a homestead exemption of \$5,000; (2) a senior or disabled exemption of \$160,000 plus the \$5,000 regular homestead exemption, for a total homestead exemption for seniors and people with disabilities of \$165,000. (This is the largest such exemption among taxing entities in Central Texas.)

Property Value	\$160,000	\$210,000	\$260,000	\$310,000	\$360,000
Regular Homestead*	\$162.44/Annual \$13.54/Month	\$214.84/Annual \$17.90/Month	\$267.24/Annual \$22.27/Month	\$319.64/Annual \$26.64/Month	\$372.04/Annual \$31.00/Month
Senior/ Disabled Exemption**	NO ACC TAX	\$52.40/Annual \$4.37/Month	\$104.80/Annual \$8.73/Month	\$157.20/Annual \$13.10/Month	\$209.60/Annual \$17.47/Month
Commercial	\$167.17/Annual \$13.93/Month	\$219.41/Annual \$18.28/Month	\$271.65/Annual \$22.64/Month	\$323.89/Annual \$26.99/Month	\$376.13/Annual \$31.34/Month

Tax Rate = \$0.1048

*Homestead Exemption = \$5,000

**Seniors or Disabled Exemption = \$160,00 plus \$5,000 regular homestead = Total: \$165,00



ACC TAX RATE HISTORY

ACC Tax History Rate

<u>Period</u>	<u>Rate</u>
2018-19	\$0.1048
2017-18	\$0.1008
2016-17	\$0.1020
2015-16	\$0.1005
2014-15	\$0.0942
2013-14	\$0.0949

PFLUGERVILLE SERVICE PLAN

- **Workforce Innovation Campus/Center** to meet workforce needs in healthcare, IT and/or advanced manufacturing and academic transfer education courses in PfISD.
- **Student support services** including advising, admissions and records, academic counseling, career counseling, financial aid, and student life.
- **Customized training** to assist businesses and organizations in their employee training.
- **Access to degrees and/or certificates** in transfer, career pathways, and Continuing Education non-credit.



SERVICE PLAN (CONT'D)

- **“Access” programs** such as English-as-a Second Language (ESL), GED, and Adult Basic Education to prepare people for entering college credit programs.
- **Job-Training programs** credit or non-credit entry-level, and re-entry programs that can be completed in one year or less.
- **Eligibility to vote and run for** the ACC Board of Trustees.

ANNEXATION PROCESS

- Community-led initiative
- Petition Process
 - 5% of registered voters (2,710 signatures required)
 - More than 3,500 signatures collected
 - ACC Board of Trustees certified petitions (June 4, 2018)
- Service Plan/Public Hearing notice posted (June 9, 2018)
- ACC Board calls public election (August 13, 2018)
- November General Election (November 6, 2018)

ANNEXATION PROCESS

If Annexation passes:

Pflugerville ISD residents are immediately eligible for in-district tuition rates starting Spring 2019.

Campus development steps:

- College meets with leadership stakeholders (city, chamber, ISD, civic leaders) to discuss community higher-education needs
 - Convening of a multi-stakeholder task force to review available educational and employment data and trends for the Pflugerville ISD area
 - Review of long-term development trends and community master plans
- College and community hone plans for educational offerings through charrette or other public-input gathering process
 - Task force issues report on optimal educational offerings for a Pflugerville campus
 - College integrates this information into its strategic plan

ANNEXATION PROCESS

- ACC Board of Trustees approval of strategic plan for Pflugerville campus
- Solicitation of facility design and purchase of land/property at a location within the boundaries of the annexed area
- Permitting and approvals
- Groundbreaking
- Campus opens

STAY CONNECTED

For questions and information

austincc.edu/annexation

@accdistrict

